



# MESTAfusion

## Traffic behavior detection and monitoring for safer journeys



Advanced monitoring of  
complex violations and  
trajectories



Monitoring up  
to eight lanes



Designed for extreme  
environmental conditions



# MESTAfusion

supports law enforcement agencies, transport and highway authorities to keep roads and cities safe.

## REDUCE DANGEROUS AND ABNORMAL BEHAVIORS

MESTAfusion fits with any road safety use case by combining red light monitoring, instant speed control and forbidden trajectories detection. It ultimately brings significant improvements on road safety resulting in an increased compliancy with regulations.

By being able to detect complex violations and trajectories, MESTAfusion has a positive impact on drivers' behaviors and thereby prevents accidents from happening.

## HIGH PERFORMANCE RATE IN HARSH CONDITIONS

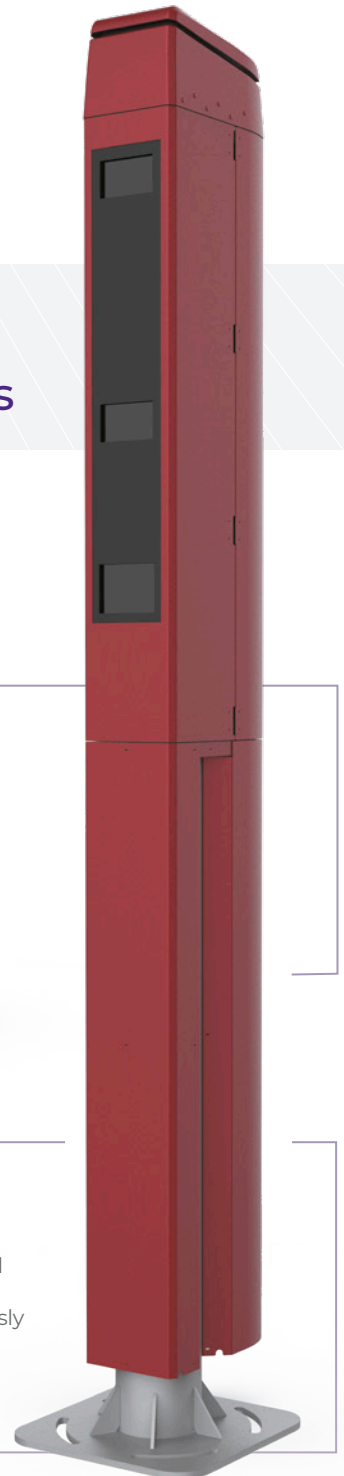
MESTAfusion offers the highest violation detection rate on the market for both speed and red-light running. The high quality and high resolution pictures of the violation offer a «courtproof», accurate and reliable measurement of speed, vehicle position and classification.

MESTAfusion is fitted with a high multi beam tracking doppler with a wide angle that monitors lanes simultaneously on a crossroad. This unique solution fits any type of site, from urban environments to open roads.

Successfully deployed in Canada and in the Middle East, MESTAfusion is adapted to extreme environmental conditions.

## ADAPTABLE TO ANY LANDSCAPE

MESTAfusion is available in various colors to perfectly fit your landscape or your educational approach.

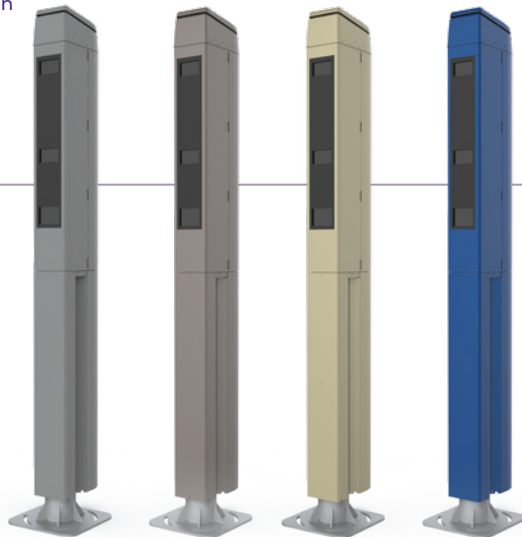


## ANPR Camera\* for enhanced public security capabilities

\* optional, ANPR Camera (Automated Number Plate Recognition) as an add-on on top of the MESTAfusion for an all in one solution

### Colors

Aluminium White	
Anodic bronze	
Anodic Champagne	
Electric Dream	
Digital Red	

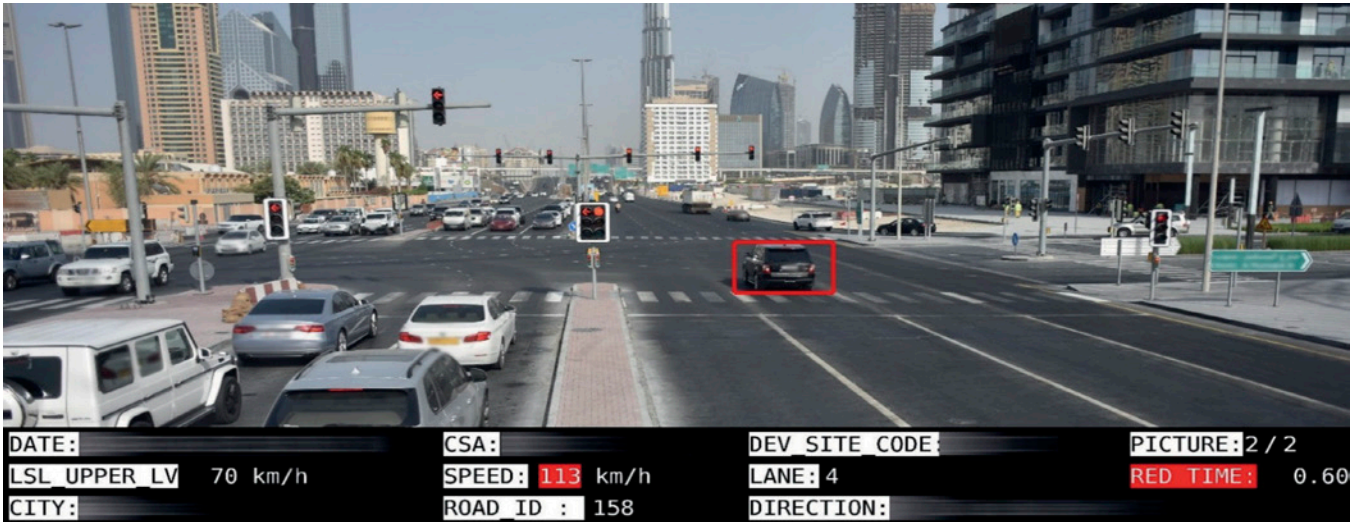


### Key functionalities

- › Snapshot 24Mpix or 45Mpix camera
- › Speed: up to 320 km/h
- › Distance of detection: up to 150m
- › Adapted to extreme weather conditions (-40°C to +55°C, 95% HR, IP 66)
- › Height: 4 meters for limited vandalism
- › Configuration: red light enforcement and speed enforcement in receding and approaching mode, or both simultaneously
- › Accurate speed measurement: +/-3%

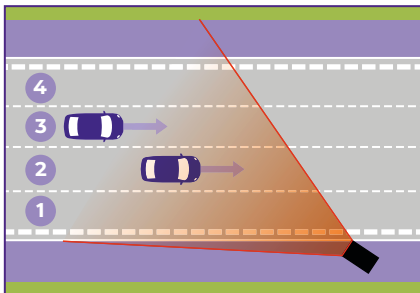
# MESTAfusion

is a non intrusive and powerful combination of the latest technologies. MESTAfusion integrates a multi-target tracking traffic law enforcement system and a high resolution camera (45Mpix) to perform perfectly at large intersections.



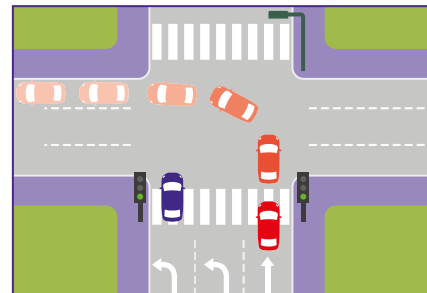
Monitors up to 32 vehicles on 8 lanes and accurately designates the violating vehicle for each type of violation

## Complex violation and trajectory detection



### SPEEDING AND ADVANCED VIOLATIONS

- › Speed per class and per lane
- › Forbidden lanes
- › Overtaking on the wrong side
- › Tailgating
- › Under speed limit



### REDLIGHT RUNNING AND ADVANCED VIOLATIONS

- › Speed on green light
- › Illegal left of right turn
- › Illegal U-turn
- › Illegal lane
- › PedX or yellow box area

## Why IDEMIA?

IDEMIA enables any individual to live in a secure, safe and convenient environment, including safer roads and cities.

With over 40 years' experience in the road safety market, IDEMIA has delivered more than 10,000 traffic law enforcement systems.

IDEMIA's systems successfully operate in France, Belgium, Canada, Colombia and in several places in the

Arabic Gulf region. Relying on its long-standing expertise in deep-learning for video and image analysis, IDEMIA is committed to provide best in-class solutions for road safety with innovative traffic law enforcement systems that prevent dangerous driving behavior, and increase the security and the efficiency of road safety enforcement.

# MESTAfusion

Detect and monitor  
traffic behaviors for  
safer journeys 